

Committed to Providing Quality Products
with the Best Service

Uflow[®]
Automation
INDIA

Automation
Simplified...



Solenoid Valve

Angle Seat Valve

Rotary Coupling

Pneumatic Directional Control Valve

Actuator

Cylinder

One Touch Fitting

Ball Valve

Butterfly Valve



Country of Origin - INDIA



Uflow Automation is an engineering organization committed to provide complete solutions to customer's requirements. We are established in the year 2007 and progressing with a vision of applying finest engineering practices in valve manufacturing industry by our restless and high skilled **ENGINEERS**, standard organizational **PROCESSES** and superior quality **PRODUCTS**.

We are leading in solenoid valve manufacturing company in India, Know as **UFLOW** our range of products include - Pilot Operated Diaphragm Type Valves, Pneumatically Control Valves, Gas Solenoid valves, High Pressure Valves, Industrial Valves, Pneumatic Directional Control Valves, Rotary Coupling and Actuators. Our products are sold across INDIA and being exported outside India in various other countries.

Our Quality	Our Commitment	About Us
<ul style="list-style-type: none"> ☑ In-House full scale testing facility. ☑ Lean manufacturing practices / six sigma, kaizen, 5S. ☑ Certified by : ISO 9001:2015 (TUV Nord), CE, ERDA, CIMFR, BIS, PESO. 	<ul style="list-style-type: none"> ☑ To understand customer's need first before proposing our products. ☑ To keep on providing competitive rate's by adapting to continuous process improvement, without compromising on quality. ☑ To provide continuous support to our customers and go beyond their expectations in terms of delivery and after sale services. 	<ul style="list-style-type: none"> ☑ In house R&D, manufacturing and testing facility is all located in a single premise at Rajkot Gujarat India. ☑ Authorized channel partners in 20 different states in India. ☑ Sales office in the UAE, Germany, Chile, Australia (Expanding).

We started building our products for a specific market segment and over the period of time we progressed to built it for various sectors that includes:

- | | | | | | |
|-----------|-------------------|------------------|---------------------|------------------|--------------|
| ☑ Textile | ☑ Water Treatment | ☑ Energy & Power | ☑ Packaging | ☑ Pharmaceutical | ☑ Oil & Gas |
| ☑ Nuclear | ☑ Marine | ☑ Chemical | ☑ Food and Beverage | ☑ Steel & Cement | ☑ Automotive |

We stand amongst the pioneers of the industry because of our following competitive advantages:

- ☑ Total quality management allow us to maintain the quality of our products,
- ☑ We follow genuine customer relationship policy and that help us to build trusted relationships.
- ☑ We believe in timely delivery and consistent quality standard, and this is possible due to the state of the art testing facility, that ensures our customers don't have any complains.
- ☑ Innovative products range with sophisticated and latest technology.
- ☑ Qualified customer service team, facilitate with the customers to resolve their respective query. Also feel free to ask for our customer references and product samples.

Uflow's Quality control is based on the platform of stringent process control by elimination of production variances; by a computerized integrated system we are able to guarantee the quality of products, and by recording each production step to ensure effective data analysis as well as a complete and efficient traceability of both components and finished products. This practice helps us in maintaining standards of high competitiveness in the marketplace.

Note: *For Any Other Information Contact Uflow.
* All Information may change without prior notice.



MICRO LIMIT SWITCH SERIES



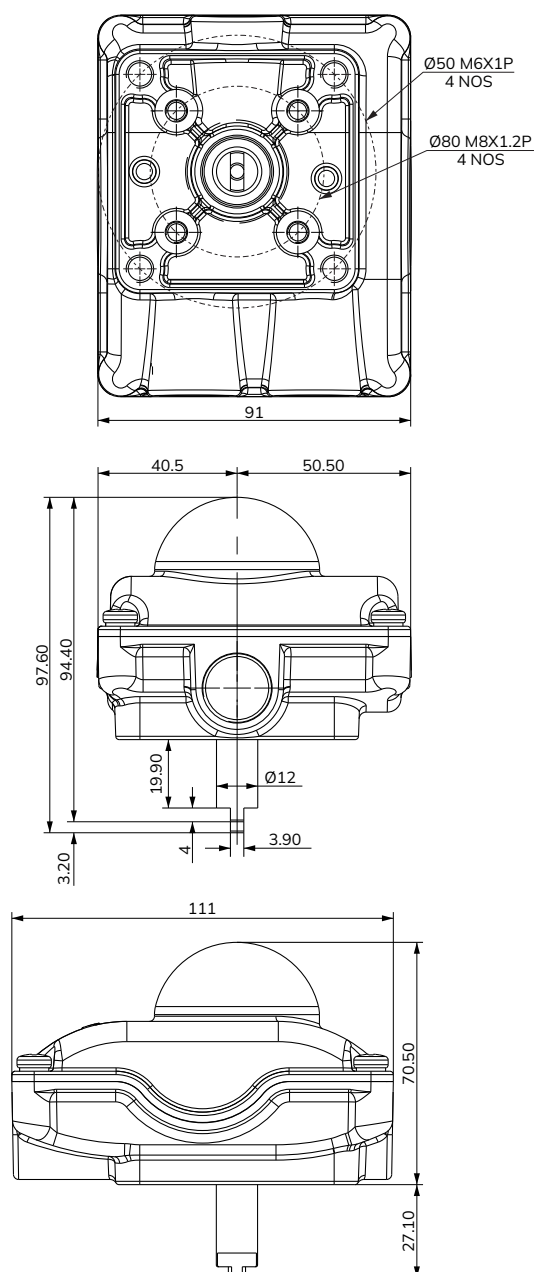
Specification

Model No.	Body Material	Switch	No. Of Elements	Cable Gland
GWP11AMV0	ALU+Plastic	5A	1 NO & 1 NC	M20 X 1.5
GWP12AMV0	ALU+Plastic	5A	2 NO & 2 NC	M20 X 1.5

Features

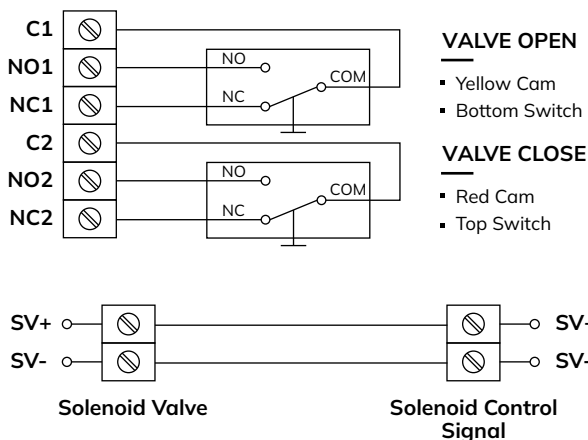
- ☒ Compact & Lightweight design
- ☒ Weatherproof limit switch.
- ☒ Open / Close indicator visible from all directions.
- ☒ Temperature range -20°C to +80°C
- ☒ No extra attachment required for the indicator dome as it is inbuilt with a transparent cover.
- ☒ Cable entries with multiple connectivity option (M20 & 1/2" NPT).
- ☒ A stainless steel bracket is available as an option.
- ☒ Every adjustable serrated cam for fast & Fine switch adjustment & Also helpful for fine adjusting of feedback setting.

Dimension Drawing (All dimensions in mm)



All dimensions are approx.

Wiring Diagram



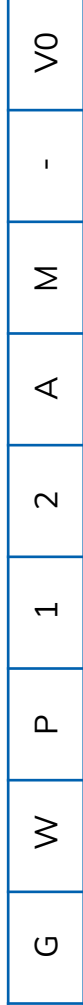
Indicator

The two piece unique indicator, ensures a life long visibility.



Standard Indicator Color Red & Yellow

LIMIT SWITCH MODEL IDENTIFICATION CHART



PRODUCT TYPE	PROTECTION TYPE	BODY MATERIAL	SWITCH	NO OF ELEMENTS	CABLE GLAND	BRACKET MATERIAL	CONFIGURATION	VERSION
G	Limit Switch	A	1	1 NO & 1 NC	A	M	BLANK	V0
	Weather Proof	Aluminium	5A HONEYWELL	1	M20 X 1.5	MS Powder Coated	REGULAR	VERSION 0
	F	ALU + Plastic	15A HONEYWELL	2	B	4	C1	V1
							C2	V2
							C3	V3
							:	:
							:	:
							C9	V9
							CA	VA
							CB	VB
								VERSION 10
								VERSION 11

GWP12AMV0
SEAL KIT 1/2" ANGLE SEAT VALVE CF8-PTFE-0 TO 7 Bar-50 NAMUR

Our Clients



Global Presence...



Made In India



CONTACT US:

✉ sales@uflowvalve.com ☎ +91 89059 07070 📞 +91-2827-254343 🌐 www.uflowvalve.com

📍 Uflow Automation, Ankur Industrial Complex, Sur vey No: 275/276, Plot No: 31, Nr. Intol Cast Pvt. Ltd. Shapar(Veraval) Dist.: Gujarat (India) - 360 024.