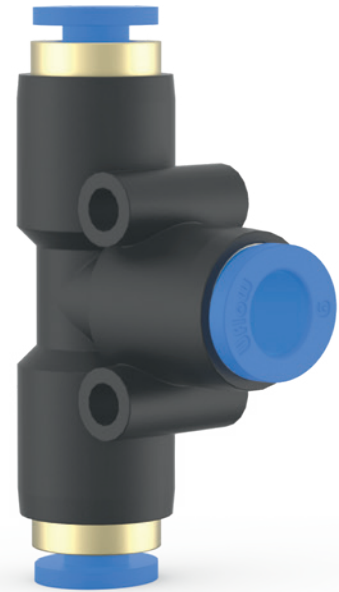


Automation
Simplified...



Solenoid Valve

Angle Seat Valve

Rotary Coupling

Pneumatic Directional Control Valve

Actuator

Cylinder

One Tuch Fitting

Ball Valve

Butterfly Valve

Specifications

Fluid :	Air																															
Max. operating pressure :	10 Bar																															
Ambient temperature :	-10°C to +60°C																															
Threaded connection :	Male : R - Taper thread, Female : G - Parallel thread																															
Media temperature :	+5°C to 50°C																															
Applicable tube material :	Nylon, Polyurethane																															
Applicable tube size (OD) :	Ø4, Ø6, Ø8, Ø10, Ø12, Ø14, Ø16																															
Recommended tolerance for tube OD :	±0.1 mm																															
Recommended minimum wall thickness of tubes :	<table border="1"> <thead> <tr> <th colspan="2">Nylon</th> <th colspan="2">PU</th> </tr> <tr> <th>Tube OD (mm)</th> <th>Thickness (mm)</th> <th>Tube OD (mm)</th> <th>Thickness (mm)</th> </tr> </thead> <tbody> <tr> <td>Ø4</td> <td rowspan="6">1</td> <td>Ø4</td> <td>1</td> </tr> <tr> <td>Ø6</td> <td>Ø6</td> <td>1</td> </tr> <tr> <td>Ø8</td> <td>Ø8</td> <td>1.5</td> </tr> <tr> <td>Ø10</td> <td>Ø10</td> <td>1.5</td> </tr> <tr> <td>Ø12</td> <td>Ø12</td> <td>2</td> </tr> <tr> <td>Ø14</td> <td>Ø14</td> <td>2</td> </tr> <tr> <td></td> <td></td> <td>Ø16</td> <td>2.5</td> </tr> </tbody> </table>	Nylon		PU		Tube OD (mm)	Thickness (mm)	Tube OD (mm)	Thickness (mm)	Ø4	1	Ø4	1	Ø6	Ø6	1	Ø8	Ø8	1.5	Ø10	Ø10	1.5	Ø12	Ø12	2	Ø14	Ø14	2			Ø16	2.5
Nylon		PU																														
Tube OD (mm)	Thickness (mm)	Tube OD (mm)	Thickness (mm)																													
Ø4	1	Ø4	1																													
Ø6		Ø6	1																													
Ø8		Ø8	1.5																													
Ø10		Ø10	1.5																													
Ø12		Ø12	2																													
Ø14		Ø14	2																													
		Ø16	2.5																													

Features

- ☑ Compact & Captivating Design
- ☑ All Threaded nipples has plastic portion that is capable of rotating 360°
- ☑ Full bore piping enables smooth flow of fluids.
- ☑ New Design SS collet
- ☑ Air tight sealing of tubes
- ☑ Compatible with both Nylon & PU pipes
- ☑ Male Taper threads with PTFE coating
- ☑ Durable & Maintenance free
- ☑ Robust collet design lets the fitment & function remains unaffected even due to vibration.
- ☑ Simple & fast connection of tube just by plugging-in manually and similarly smooth way of pulling-out just by the press of plastic collet cap.

Features

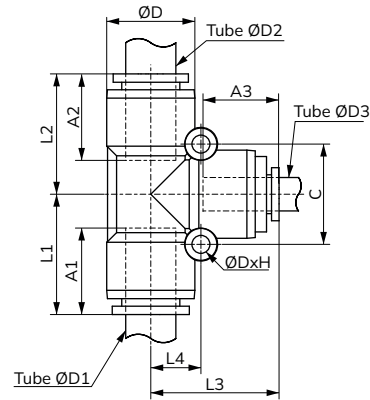
One-touch fitting can be effectively used in all compressed air applications
Some of the pneumatic application include

- ☑ Pneumatic cylinders (all types)
- ☑ All compressed air lines, machinery of all kinds wherever pneumatic systems are used
- ☑ Directional control valves(DCV), solenoid valves(SOV) and other valves
- ☑ Pneumatic control & circuit panels
- ☑ Air preparation units like filter, regulator and lubricators(FRL)

Union Tee Reducer



Dimension Drawing (All dimensions in mm)



Technical Data

Model No.	Tube OD			ØD	L1	L2	L3	L4	C	A1	A2	A3	ØDxH
	ØD1	ØD2	ØD3										
VO26040406	4	4	6	12.6	22.8	22.8	20	7.5	15	12.4	12.4	16	Ø3.3X13
VO26060604	6	6	4	12.6	20	20	22.8	7.5	15	16	16	12.4	Ø3.3X13
VO26060608	6	6	8	15	26	26	24	9	18	16.3	16.3	17.2	Ø3.3X15.5
VO26061212	6	12	12	21.1	30.2	28.8	28.8	12	24	17.3	20.7	20.7	Ø4.3X20.5
VO26080806	8	8	6	15	24	24	26	9	18	17.2	17.2	16.3	Ø3.3X15.5
VO26080810	8	8	10	18.5	28.7	28.7	26.4	11	22	17.7	17.7	19.2	Ø4.3X19
VO26081212	8	12	12	21.1	30.7	28.8	28.8	12	24	18.2	20.7	20.7	Ø4.3X24
VO26101006	10	10	6	18.5	26.4	26.4	28.2	11	22	19.2	19.2	17.2	Ø4.3X19
VO26101008	10	10	8	18.5	26.4	26.4	28.7	11	22	19.2	19.2	17.7	Ø4.3X19
VO26101012	10	10	12	21.1	31.2	31.2	28.8	12	24	20.2	20.2	20.7	Ø4.3X20.5
VO26121206	12	12	6	21.1	28.8	28.8	30.2	12	24	20.7	20.7	17.3	Ø4.3X20.5
VO26121208	12	12	8	21.1	28.8	28.8	30.7	12	24	20.7	20.7	18.2	Ø4.3X20.5
VO26121210	12	12	10	21.1	28.8	28.8	30.2	12	24	20.7	20.7	20.2	Ø4.3X20.5

Global Presence...



Made In India



CONTACT US:

✉ sales@uflowvalve.com ☎ +91 89059 07070 📞 +91-2827-254343 🌐 www.uflowvalve.com

📍 Uflow Automation, Ankur Industrial Complex, Sur vey No: 275/276, Plot No: 31, Nr. Intol Cast Pvt. Ltd. Shapar(Veraval) Dist.: Gujarat (India) - 360 024.