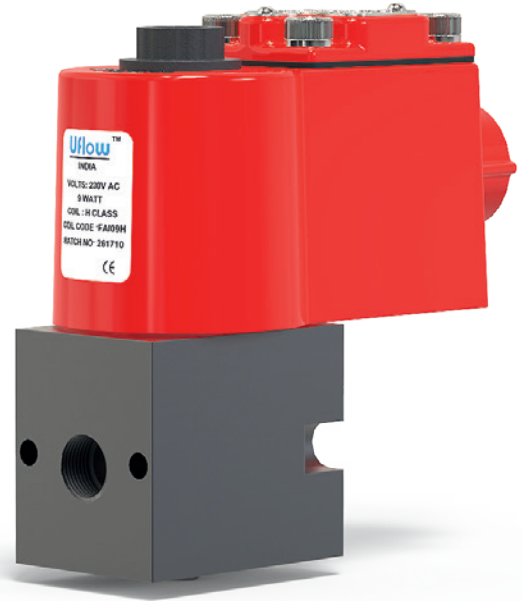


**3 WAY DIRECT ACTING  
POPPET VALVE  
(NORMALLY CLOSE)**

Automation  
Simplified...



Solenoid Valve

Angle Seat Valve

Rotary Coupling

Pneumatic Directional Control Valve

Actuator

Cylinder

One Touch Fitting

Ball Valve

Butterfly Valve



## Valve Specifications

Type :	3 Way
Design :	3 Way Direct Acting Poppet Type
Port Size :	In / Out / Exhaust - ¼" BSP (Available in NPT)
Media :	Compressed Air (Filtered & Lubricated)
working Pressure Range :	0-10 Bar
Orifice :	5mm
Flow Factor :	8 kv (LPM of Water @ 1 bar ΔP)
Ambient / Media Temperature :	5°C - 60°C
Materials of Construction :	Aluminium, Nitrile, Polymer, Brass

## Coil Specification

Operating Voltage :  
Power Consumption :

24V AC	110V AC	230V AC	24V DC
9W	9W	9W	11W

Coil Features :  
Coil Housing :

High Reliability Unaffected by Voltage Surges. Easy coil changes coil lockable in 4X90 position or freely movable in between as require.  
IP65 Epoxy square coil, IP65 Metallic round enclosure, IP67 Flameproof Junction box, IP68 Weatherproof enclosure.

## Port Connection

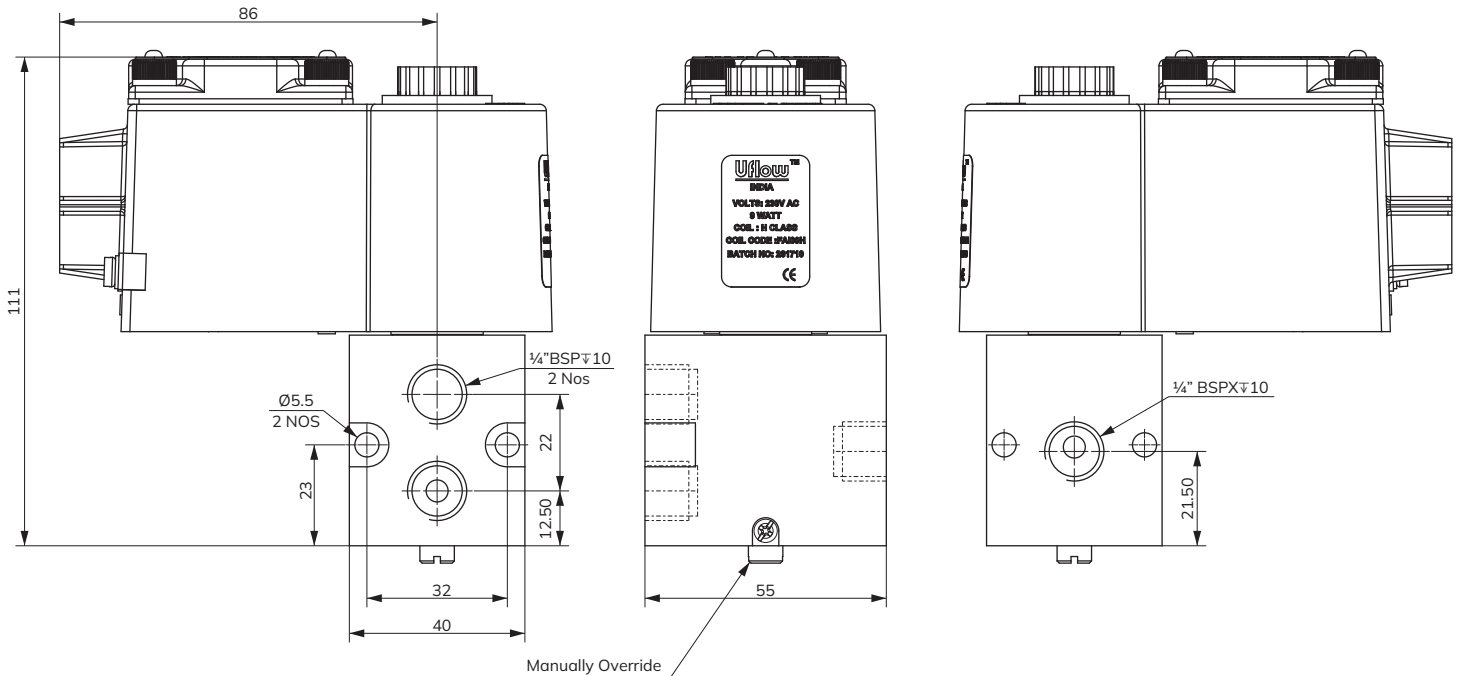
1 - Input, 2 - Output, 3 - Exhaust

Model No.	Coil Type	Function	Symbol
TAN104BUGT050V0	AC	Single Solenoid Spring Return	
TAN104BUHT050V0	DC		

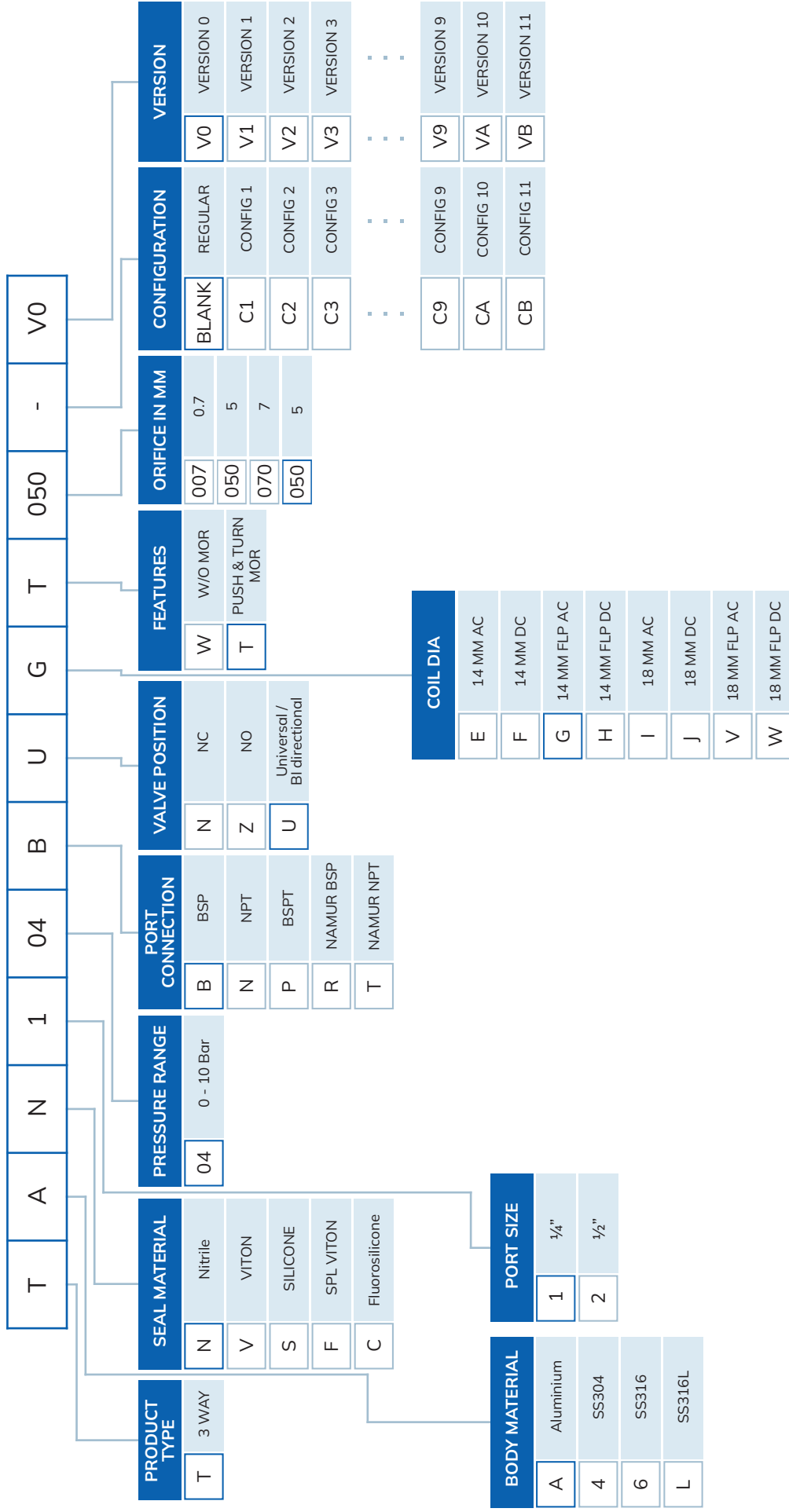
## Features

- Fast response time 1000 cycle/min
- Manual override
- 10 Million cycle tested
- Lubrication not essential
- Universal Type (NO/NC)

## Dimension Drawing (All dimensions in mm)



# 3 WAY DIRECT ACTING POPPET TYPE VALVE MODEL IDENTIFICATION CHART



**TAN104BUGT050V0**  
1/4" 3 WAY DIRECT ACTING ALUMINIUM-NITRILE-0 TO 10 Bar-BSP-UNIVERSAL-14MM FLP AC-PUSH & TURN MOR-5MM ORIFICE

Note: The above chart is for identification purposes only, and it may not be possible to make all combinations for the above chart.

# Global Presence...




Made In India



## CONTACT US:

 [sales@uflowvalve.com](mailto:sales@uflowvalve.com)  +91 851 109 8822  [www.uflowvalve.com](http://www.uflowvalve.com)

 Uflow Automation, Ankur Industrial Complex, Sur vey No: 275/276, Plot No: 31, Nr. Intol Cast Pvt. Ltd. Shapar( Veraval) Dist.: Gujarat (India) - 360 024.