

Committed to Providing Quality Products
with the Best Service

Uflow[®]
Automation
INDIA

Automation
Simplified...



Solenoid Valve

Angle Seat Valve

Rotary Coupling

Pneumatic Directional Control Valve

Actuator

Cylinder

One Touch Fitting

Ball Valve

Butterfly Valve

Country of Origin - INDIA





Uflow Automation is an engineering organization committed to provide complete solutions to customer's requirements. We are established in the year 2007 and progressing with a vision of applying finest engineering practices in valve manufacturing industry by our restless and high skilled **ENGINEERS**, standard organizational **PROCESSES** and superior quality **PRODUCTS**.

We are leading in solenoid valve manufacturing company in India, Know as **UFLOW** our range of products include - Pilot Operated Diaphragm Type Valves, Pneumatically Control Valves, Gas Solenoid valves, High Pressure Valves, Industrial Valves, Pneumatic Directional Control Valves, Rotary Coupling and Actuators. Our products are sold across INDIA and being exported outside India in various other countries.

Our Quality	Our Commitment	About Us
<ul style="list-style-type: none"> ☑ In-House full scale testing facility. ☑ Lean manufacturing practices / six sigma, kaizen, 5S. ☑ Certified by : ISO 9001:2015 (TUV Nord), CE, ERDA, CIMFR, BIS, PESO. 	<ul style="list-style-type: none"> ☑ To understand customer's need first before proposing our products. ☑ To keep on providing competitive rate's by adapting to continuous process improvement, without compromising on quality. ☑ To provide continuous support to our customers and go beyond their expectations in terms of delivery and after sale services. 	<ul style="list-style-type: none"> ☑ In house R&D, manufacturing and testing facility is all located in a single premise at Rajkot Gujarat India. ☑ Authorized channel partners in 20 different states in India. ☑ Sales office in the UAE, Germany, Chile, Australia (Expanding).

We started building our products for a specific market segment and over the period of time we progressed to built it for various sectors that includes:

- | | | | | | |
|-----------|-------------------|------------------|---------------------|------------------|--------------|
| ☑ Textile | ☑ Water Treatment | ☑ Energy & Power | ☑ Packaging | ☑ Pharmaceutical | ☑ Oil & Gas |
| ☑ Nuclear | ☑ Marine | ☑ Chemical | ☑ Food and Beverage | ☑ Steel & Cement | ☑ Automotive |

We stand amongst the pioneers of the industry because of our following competitive advantages:

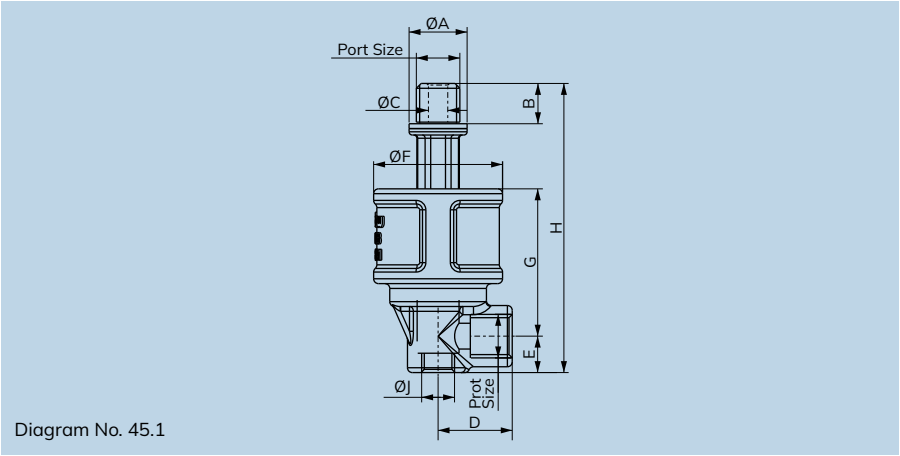
- ☑ Total quality management allow us to maintain the quality of our products,
- ☑ We follow genuine customer relationship policy and that help us to build trusted relationships.
- ☑ We believe in timely delivery and consistent quality standard, and this is possible due to the state of the art testing facility, that ensures our customers don't have any complains.
- ☑ Innovative products range with sophisticated and latest technology.
- ☑ Qualified customer service team, facilitate with the customers to resolve their respective query. Also feel free to ask for our customer references and product samples.

Uflow's Quality control is based on the platform of stringent process control by elimination of production variances; by a computerized integrated system we are able to guarantee the quality of products, and by recording each production step to ensure effective data analysis as well as a complete and efficient traceability of both components and finished products. This practice helps us in maintaining standards of high competitiveness in the marketplace.

Note: *For Any Other Information Contact Uflow.
* All Information may change without prior notice.



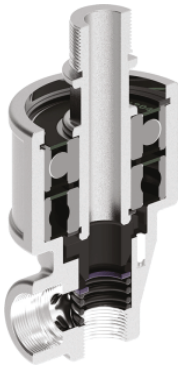
ROTO SEAL COUPLING SERIES



Specifications

Port :	Refer below technical data sheet (Available BSP / NPT)	
Media :	Air, Water, Oil & Gas	
Pressure :	Upto 10 bar	
Temperature :	Nitrile (NBR)	Viton (FKM)
	-30°C to 90°C	-10°C to 180°C
RPM :	1000 RPM	

Section View



Features

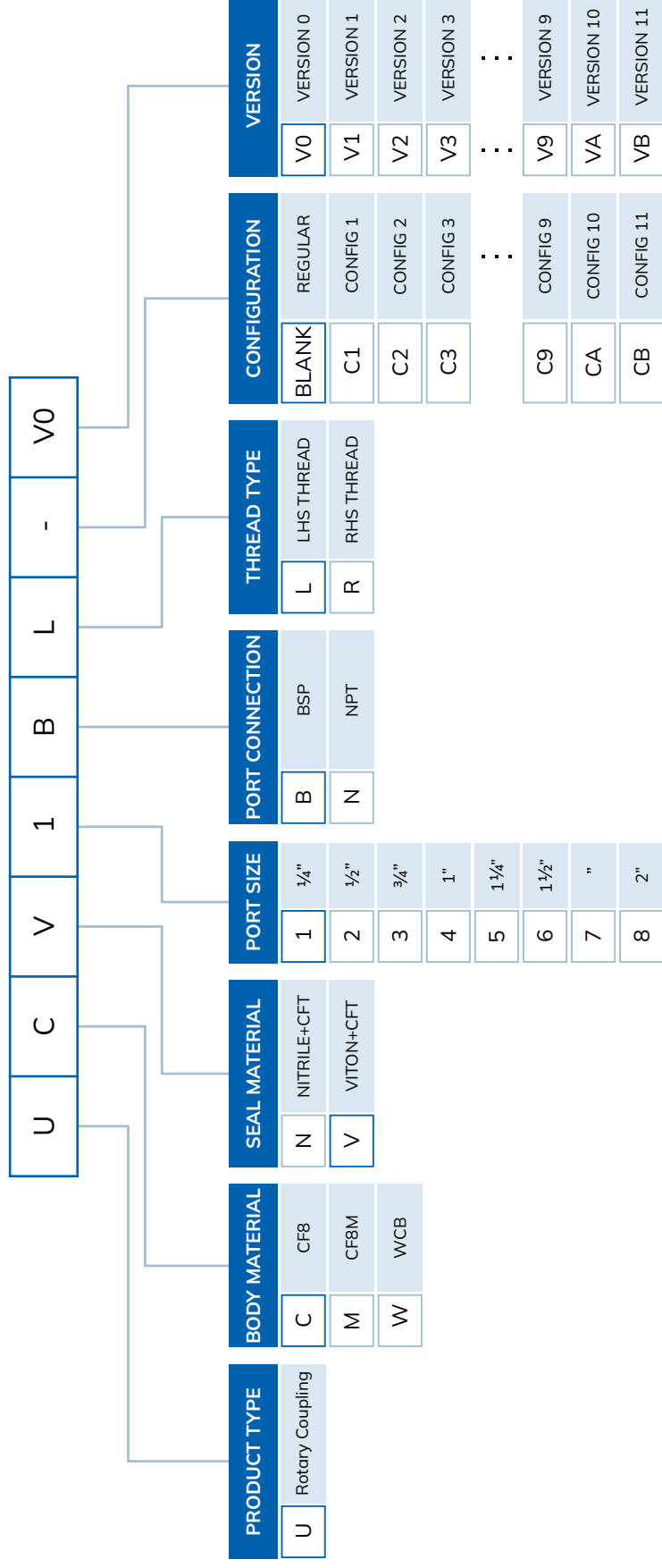
- ☑ High-Performance Bearings & Seals.
- ☑ Dual Connection Available.

Technical Data (All dimensions in mm)

All Dimensions are approx.

Model No.	Diagram No.	Body Material	Port Size	Seal Material	A	B	C	D	E	F	G	H	J
UCV1BLV0 / UCV1BRV0	45.1	CF8 / CF8M	¼"	NBR / VITON	18	14	6	23	12	40	45	90	⅛"
UCV7BLV0 / UCV7BRV0	45.1	CF8 / CF8M	⅜"	NBR / VITON	22	14	10	23	13	48	53	99	¼"
UCV2BLV0 / UCV2BRV0	45.1	CF8 / CF8M	½"	NBR / VITON	26	16	12	28	17	56	61	106	⅜"
UCV3BLV0 / UCV3BRV0	45.1	CF8 / CF8M	¾"	NBR / VITON	32	19	19	40	21	72	72	145	½"
UCV4BLV0 / UCV4BRV0	45.1	CF8 / CF8M	1"	NBR / VITON	39	25	24	44	28	83	84	171	¾"
UCV5BLV0 / UCV5BRV0	45.1	CF8 / CF8M	1¼"	NBR / VITON	48	27	32	49	32	95	98	193	1"
UCV6BLV0 / UCV6BRV0	45.1	CF8 / CF8M	1½"	NBR / VITON	54	27	36	48	32	95	98	193	1¼"
UCV8BLV0 / UCV8BRV0	45.1	CF8 / CF8M	2"	NBR / VITON	68	32	47	62	40	123	124	269	1½"

ROTO SEAL MODEL IDENTIFICATION CHART



UCV1BLV0

1/4" ROTARY COUPLING CF8-VITON+CFT-BSP-LHS THREAD

Our Clients



Global Presence...



Made In India



CONTACT US:

✉ sales@uflowvalve.com ☎ +91 89059 07070 📞 +91-2827-254343 🌐 www.uflowvalve.com

📍 Uflow Automation, Ankur Industrial Complex, Sur vey No: 275/276, Plot No: 31, Nr. Intol Cast Pvt. Ltd. Shapar(Veraval) Dist.: Gujarat (India) - 360 024.