

Automation
Simplified...



Solenoid Valve

Angle Seat Valve

Rotary Coupling

Pneumatic Directional Control Valve

Actuator

Cylinder

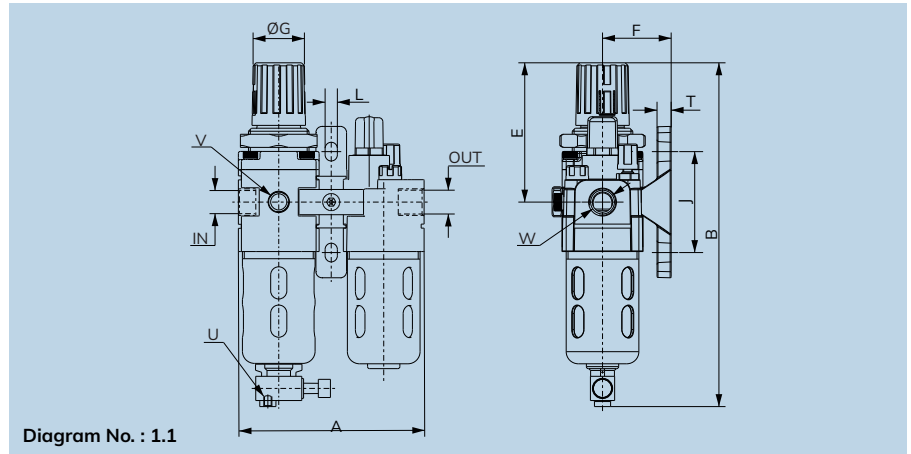
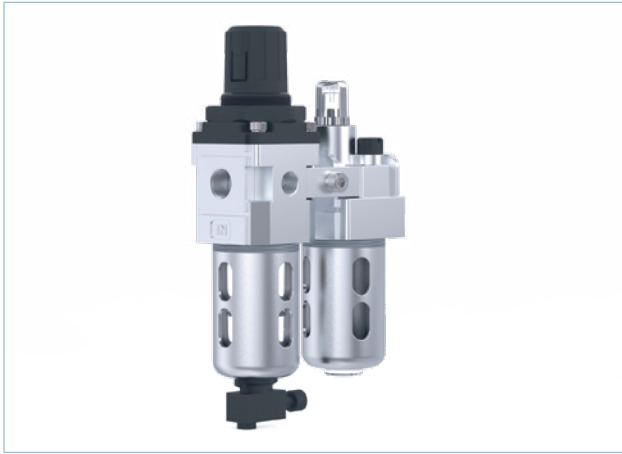
One Touch Fitting

Ball Valve

Butterfly Valve

Country of Origin - INDIA





Specifications

Model No.:	FRA106BV0-L1A106BV0 -MKFRL1V0	FRA706BV0-L1A706BV0 -MKFRL7V0	FRA206BV0-L1A206BV0 -MKFRL2V0	FRA306BV0-L1A306BV0 -MKFRL3V0	FRA406BV0-L1A406BV0 -MKFRL3V0
Media :	Compressed Air				
Port Size:	G $\frac{1}{4}$	G $\frac{3}{8}$	G $\frac{1}{2}$	G $\frac{3}{4}$	G1
Pressure Gauge Port Size:	G $\frac{1}{8}$	G $\frac{1}{8}$	G $\frac{1}{8}$	G $\frac{1}{4}$	G $\frac{1}{4}$
Flow Rate LPM*:	500	1250	2800	3500	4000
Maximum Supply Pressure:	10 Bar				
Regulating Pressure Range:	0.2- 2, 0.2- 4, 0.5- 7, 0.5- 10 (Standard)				
Ambient Temperature:	-10°C to +50°C				
Medium Temperature:	+5°C to +50°C				
Filteration (μ m)	1, 5, 25, 40 (Standard), 50, 100				
Min Operating Flow (lts / min)	12	40	45	50	50
Bowl Capacity FRC (ml) (at maximum condensate level)	9	32	44	165	165
Bowl Capacity Lubricator (ml) (at maximum oil level)	20	57	152	200	200
Recommended Oil	ISO VG 32 (Servo System 32)				
Bowl Material	Polycarbonate				
Installation:	Vertical				
Materials of construction:	Aluminium, Brass, Steel, Acetal, SS, Nitrile				
Optional accessories:	Clamp, Modular mounting kit, Pressure Gauge				

*Supply Pressure 7 bar, pressure drop $\Delta p = 0.5$ bar (For Standard Models)

Features

- Modular type for easy and fast maintenance
- Suitable for wall mounting
- Filter
 - Bronze filtering element
 - Separator and shield for efficient moisture separation
 - Press type manual drain for easy operation
- Regulator
 - Diaphragm operated, relieving type
 - Pressure compensated by balanced poppet
 - Non raising 'Press to lock' adjusting knob for locking at any set pressure
- Lubricator
 - Fog / Mist type Lubricator
 - Fine adjustment of lubrication
 - Lubrication proportional to flow
- Good flow and regulating characteristics

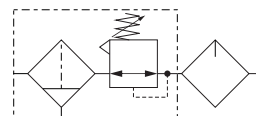
Precautions

- Note the direction of flow before installation and connect piping accordingly.
- Flush pipings for dirt, dust, rust and other foreign particles.
- Install in clean atmosphere.
- Nipples of taper threads (R) to be used with teflon tape. Ensure teflon tape does not enter the unit during tightening. Nipples of straight threads (G) to be used with sealing washer.
- Polycarbonate bowls may get damaged and possibly fail if exposed to synthetic oils, thinner, solvents, trichloroethylene, kerosene or other aromatic hydrocarbons.

Pressure Setting

Pull the knob and adjust by turning the knob clockwise to increase the pressure. Push the knob back to its locked position. (Turning the knob counter clockwise will reduce the pressure)

Symbol



Technical Data

Model No.	Diagram No.	W	V	A	B	E	F	ØG	J	L	T	U
FRA106BV0-L1A106BV0 -MKFRL1V0	1.1	¼"	⅛"	92	170	69	34	25	50	7	7	M5
FRA706BV0-L1A706BV0 -MKFRL7V0	1.1	⅜"	⅛"	124	220	95	45	40	70	7	7	M5
FRA206BV0-L1A206BV0 -MKFRL2V0	1.1	½"	⅛"	155	276	123	53	47	90	9	9	M5
FRA306BV0-L1A306BV0 -MKFRL3V0	1.1	¾"	¼"	200	370	130	70	51	100	12	10	M5
FRA406BV0-L1A406BV0 -MKFRL3V0	1.1	1"	¼"	200	370	130	70	51	100	12	10	M5

AIR PREPARATION UNITS VALVE MODEL IDENTIFICATION CHART



PRODUCT TYPE	BODY MATERIAL	PORT SIZE	PRESSURE RANGE	Port Connection	FEATURES	CONFIGURATION	VERSION
F1	A	1	06	B	REGULAR	-	V0
FR		7	0.5 - 10 Bar	N	Regulator With NRV	C1	V1
L1		2			Internal Autodrain	C2	V2
R1		3			With Metal bowl	C3	V3
S1		4			With Modular	⋮	⋮
					Without Piping Adaptor	C9	V9
					With Pressure Gauge	CA	VA
					With Service Indicator	CB	VB
							VERSION 10
							VERSION 11

F1A206BV0
1/2" FILTER ALUMINIUM-0.5 TO 10 Bar-BSP

Note: The above chart is for identification purposes only, and it may not be possible to make all combinations for the above chart.

Global Presence...



Made In India



CONTACT US:

✉ sales@uflowvalve.com ☎ +91 851 109 8822 🌐 www.uflowvalve.com

📍 Uflow Automation, Ankur Industrial Complex, Sur vey No: 275/276, Plot No: 31, Nr. Intol Cast Pvt. Ltd. Shapar(Veraval) Dist.: Gujarat (India) - 360 024.